

# EMBARK ON A JOURNEY

REWIRE YOUR BRAIN

BUILD NEW HABITS

CREATE A NEW IDENTITY

*A group of people who are  
looking to find their true  
identity and by doing so finding  
God's true identity.*

YOU HAVE THE POWER TO CHOOSE

# THE 100FOLD JOURNEY



# The 10 Truths



Memorization

**TODAY, RIGHT NOW, IS THE BEST MOMENT OF  
MY LIFE**

**ALL MY NEEDS ARE CONSTANTLY MET**

**I AM ALWAYS IN THE RIGHT PLACE, AT THE  
RIGHT TIME**

Application

**GOD HAS GRANTED ME FAVOR, IN THE SIGHT OF  
THOSE AROUND ME**

**EVERYTHING MY HAND TOUCHES, PROSPERS**

**I HAVE AN ATTITUDE OF GRATITUDE**

Meditation

**CIRCUMSTANCES DON'T MATTER, ONLY STATE  
OF BEING MATTERS**

**I HAVE UNLIMITED POSSIBILITIES & RESOURCES**

**I WILL BE GOD TO SOMEONE, TODAY**

**LIFE IS A MIRROR, WHICH REFLECTS BACK,  
WHAT I TRULY BELIEVE AND THINK**



# I AM The Dwelling Place of God

**1 Corinthians 3:16**

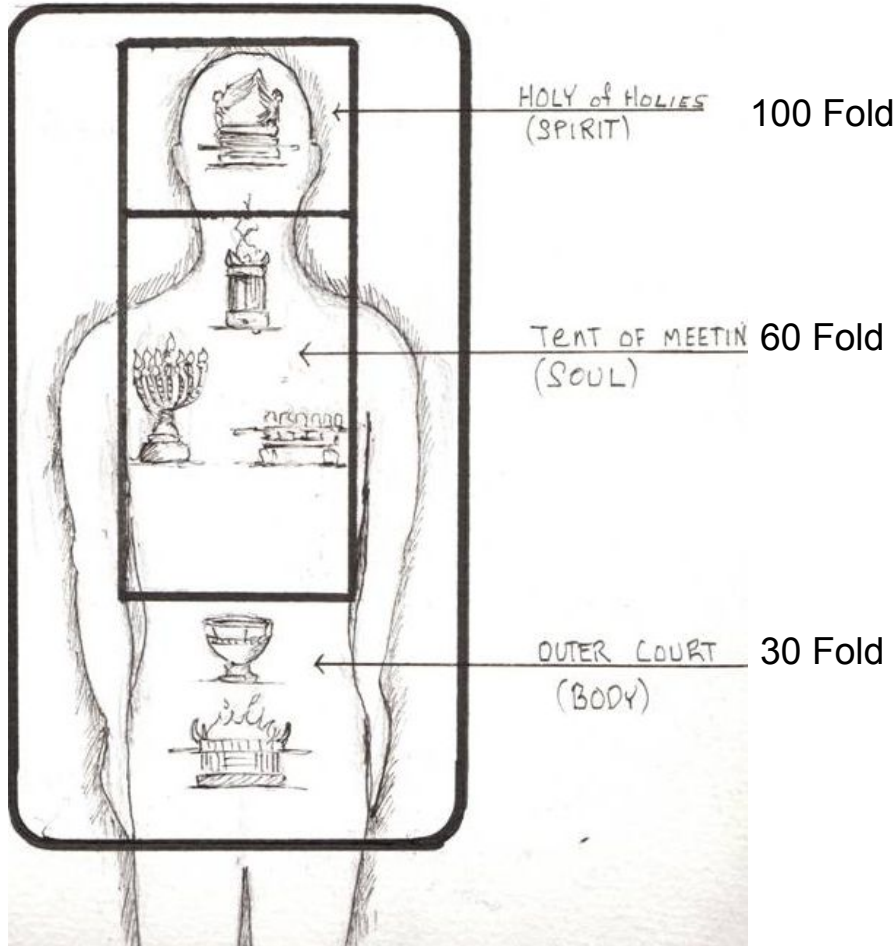
**...you are God's temple  
and God's Spirit lives  
in you!**

**John 17:22**

**I have given them the glory  
- the glory you gave me  
that they may be one  
as we are one--**



# I AM The Dwelling Place of God



## Temple Furniture

Bronze Altar

Bronze Laver

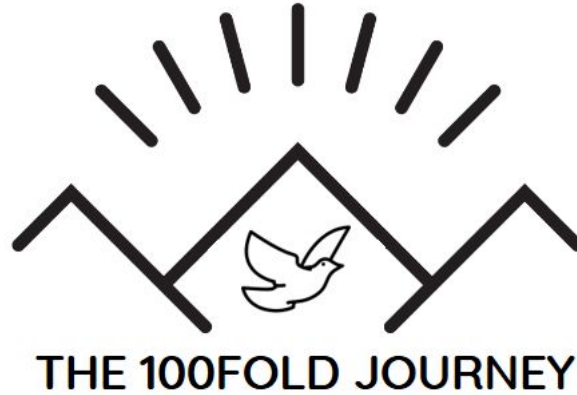
Table of Showbread

Golden Lampstand

Altar of Incense

Ark of Covenant

Mercy Seat



# I AM The Dwelling Place of God

## Part 4: Golden Lampstand

# Homework Assignment: Reading

Exodus 25:31-40    **31**“Then you shall make a lampstand of pure gold. The lampstand *and* its base and its shaft are to be made of hammered work; its cups, its bulbs and its flowers shall be *of one piece* with it. **32**“Six branches shall go out from its sides; three branches of the lampstand from its one side and three branches of the lampstand from its other side. **33**“Three cups *shall be* shaped like almond *blossoms* in the one branch, a bulb and a flower, and three cups shaped like almond *blossoms* in the other branch, a bulb and a flower—so for six branches going out from the lampstand; **34**and in the lampstand four cups shaped like almond *blossoms*, its bulbs and its flowers. **35**“A bulb shall be under the *first* pair of branches *coming* out of it, and a bulb under the *second* pair of branches *coming* out of it, and a bulb under the *third* pair of branches *coming* out of it, for the six branches coming out of the lampstand. **36**“Their bulbs and their branches *shall be of one piece* with it; all of it shall be one piece of hammered work of pure gold. **37**“Then you shall make its lamps seven *in number*; and they shall mount its lamps so as to shed light on the space in front of it. **38**“Its snuffers and their trays *shall be* of pure gold. **39**“It shall be made from a talent of pure gold, with all these utensils. **40**“See that you make *them* after the pattern for them, which was shown to you on the mountain.

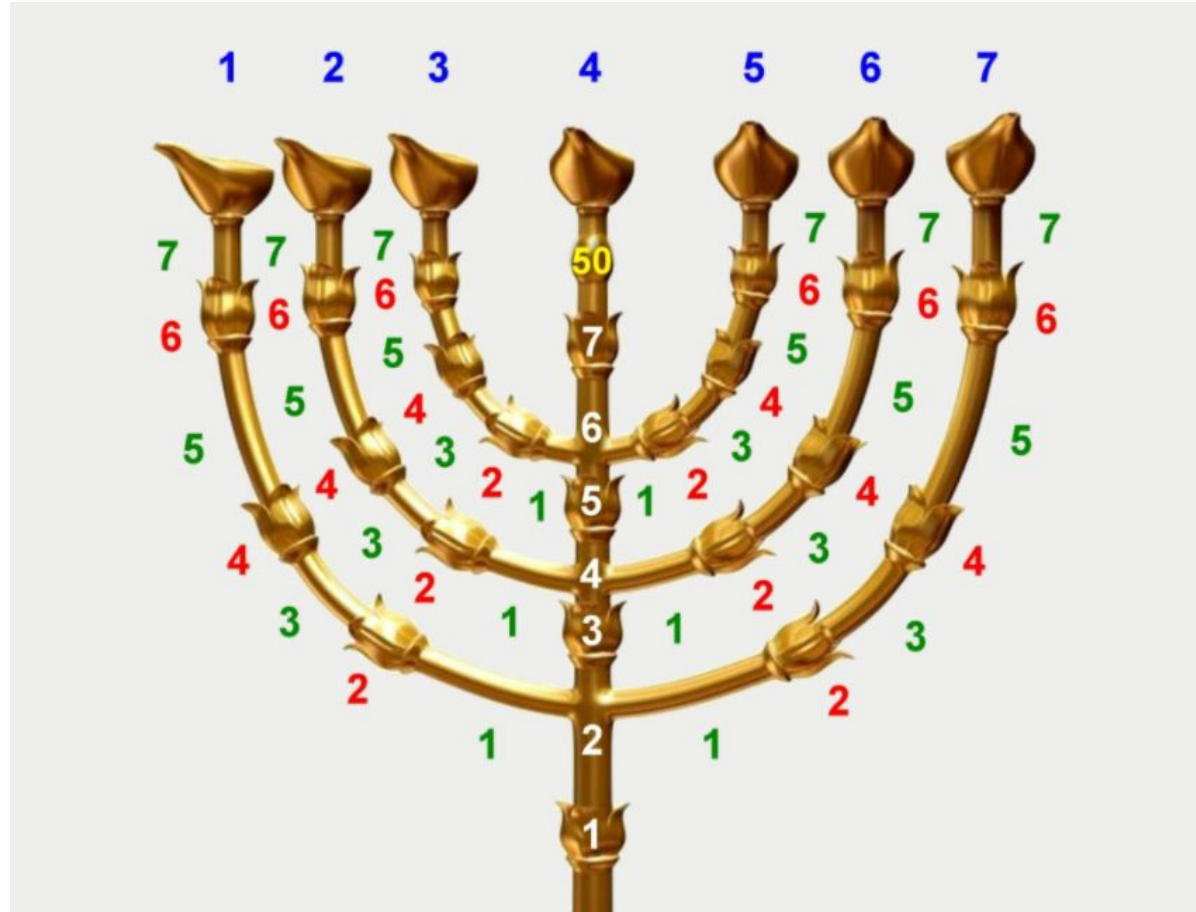
Exodus 37:24 The entire lampstand, along with its accessories, was made from 75 pounds of pure gold.

Leviticus 24:1-4    **1**Then the LORD spoke to Moses, saying, **2**“Command the sons of Israel that they bring to you clear oil from beaten olives for the light, to make a lamp burn continually. **3**“Outside the veil of testimony in the tent of meeting, Aaron shall keep it in order from evening to morning before the LORD continually; *it shall be* a perpetual statute throughout your generations. **4**“He shall keep the lamps in order on the pure *gold* lampstand before the LORD continually.

# Homework Assignment:

Leviticus 25

You shall make the  
fiftieth year holy, and  
proclaim liberty  
throughout the land to  
all its inhabitants.





# Inner Court - The Holy Place - 60 Fold





# Inner Court - Golden Lampstand - 60 Fold



# Homework Assignment:

Location in the temple? Why is the location important?

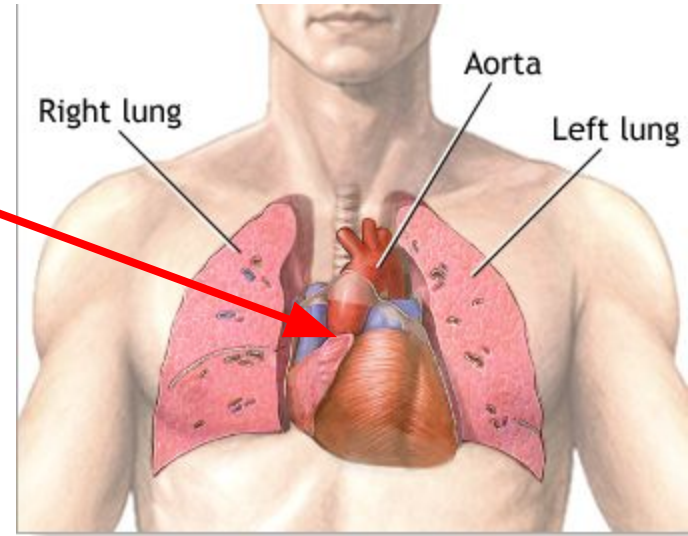
On the “left side” which is on the “south side” of the temple.

**Ex 26:35 35** Place the table outside the curtain on the north side of the tabernacle and put the lampstand opposite it on the **south** side.

Heart is located on the Left Side

The Cardinal Direction of South embodies **the Fire Element and solar energies**. It's the spark of life, intense or gentle heat, and illumination. Metaphysically we associate South with the season of Summer when the earth is abundant with blossoms and ripening fruits and vegetables.

In the Holy Place, also called the tent of meeting



# Homework Assignment:

What material was used for its construction? Why? What does this represent?

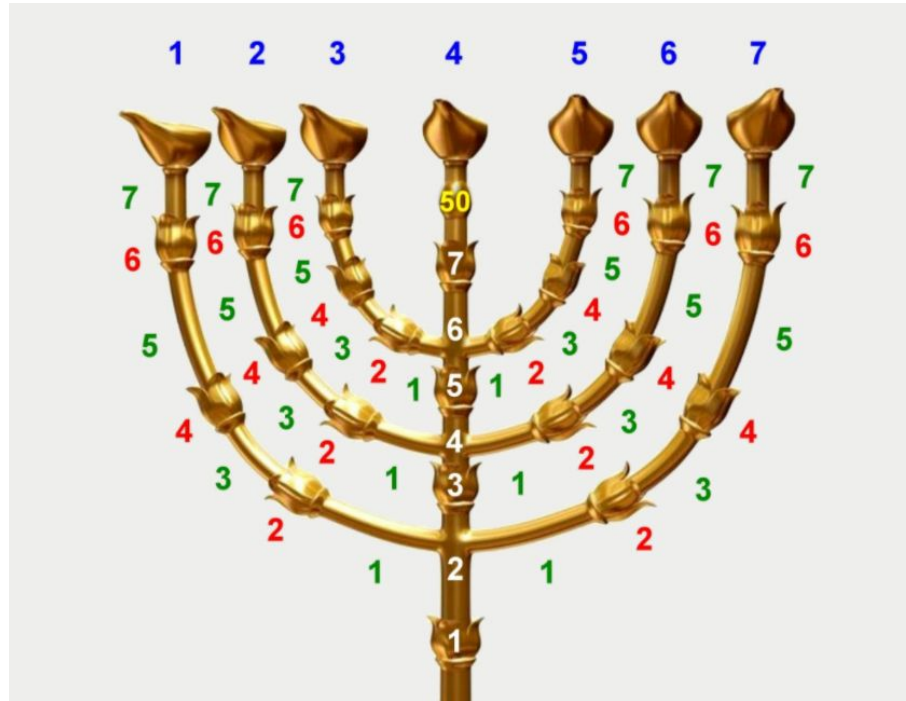
Pure Gold - no wood, hammered into shape

Exodus 37:24 The entire lampstand, along with its accessories, was made from 75 pounds of pure gold.

# Homework Assignment:

What material was used for its construction? Why? What does this represent?

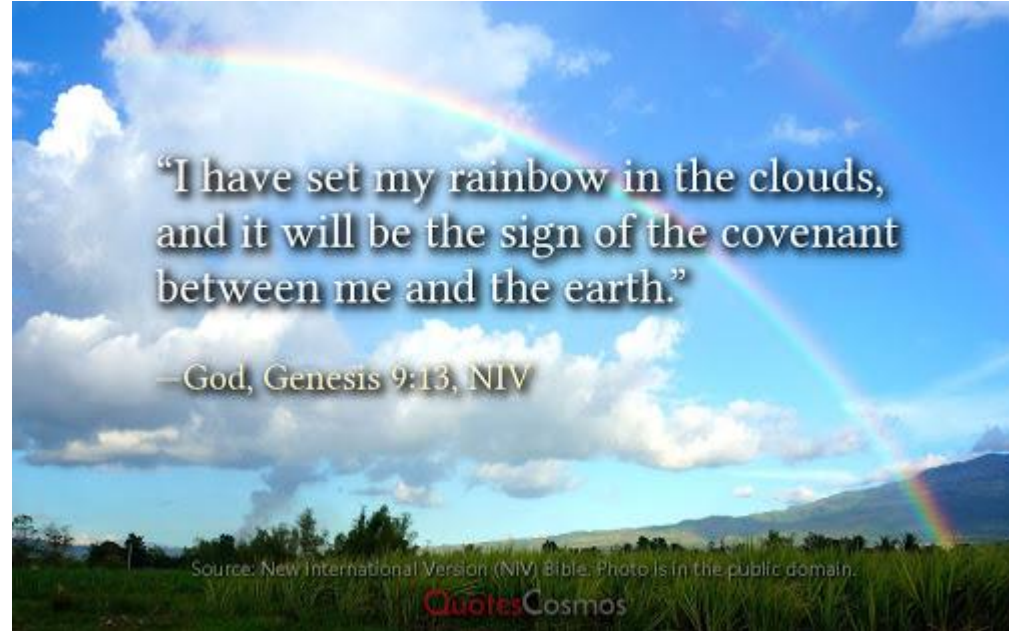
Beginning Created God      Heavens And Earth





# Seven

- ★ 7 days of Creation
- ★ 7 Words of Creation Gen 1:1
- ★ 7 Furniture in the Temple
- ★ 7 Days of the Week
- ★ 7 Ancient Wonders of the World
- ★ 7 Colors of the rainbow
- ★ 7 Seas
- ★ 7 Continents
- ★ 7 Sound Notes  
Do-Re-Me-Fa-So-La-Ti
- ★ 7 Chakras
- ★ 7 I Am Statements
- ★ 7 Feasts of the Old Covenant



# The Chakras

Mercy Seat

*Crown Chakra*

*Spirituality*

Ark of Covenant

*Third Eye Chakra*

*Awareness*

Altar of Incense

*Throat Chakra*

*Communication*

Golden Lampstand

*Heart Chakra*

*Love, Healing*

Table of Showbread

*Solar Plexus Chakra*

*Wisdom, Power*

Bronze Lavar

*Sacral Chakra*

*Sexuality, Creativity*

Bronze Altar

*Root Chakra*

*Basic Trust*



# Homework Assignment:

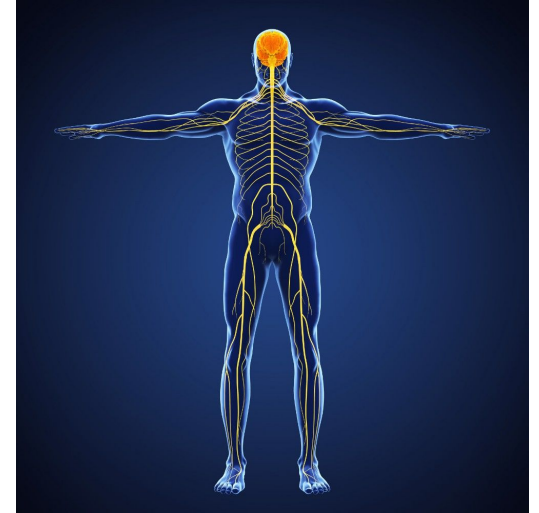
Size & Shape? Why? What do these numbers represent?

1 solid piece of Gold

7 branches (3 branches to the left, 3 branches to the right, 1 spine)



1 Corinthians 12:27 Now you are the body of Christ, and each one of you is a part of it.



# Homework Assignment:

Use & Purpose of this furniture?

To light the Holy Place, the tent of meeting, without this lamp it would be dark inside with the exception of the altar of incense which was a glow of coals which represents the prayers of the saints.

They were to be lit continuously 24/7



# Homework Assignment:

What spiritual symbol does this piece of furniture represent?

Oil is Holy Spirit - 1 Samuel 16:11-13 And Samuel said to Jesse, "Send and bring him. For we will not sit down till he comes here." 12 So he sent and brought him in. Now he was ruddy, with bright eyes, and good-looking. And the Lord said, "Arise, anoint him; for this *is* the one!" 13 Then Samuel took the horn of oil and anointed him in the midst of his brothers; and the Spirit of the Lord came upon David from that day forward. So Samuel arose and went to Ramah.

Acts 10:38 How God anointed Jesus of Nazareth with the Holy Spirit and with power. He went about doing good and healing all who were oppressed by the devil, for God was with him.

Psalms 23:5 You prepare a table before me in the presence of my enemies; you anoint my head with oil; my cup overflows.

2 Corinthians 1:21-22 And it is God who establishes us with you in Christ, and has anointed us, and who has also put his seal on us and given us his Spirit in our hearts as a guarantee.

# Homework Assignment:

What spiritual symbol does this piece of furniture represent?

Single piece of Gold hammered together

There were not multiple pieces fit together, rather 1 single piece. One body One mind One spirit

Romans 12: 4 Just as our bodies have many parts and each part has a special function, 5so it is with Christ's body. We are many parts of one body, and we all belong to each other.

Exodus 25:31-40 31“Then you shall make a lampstand of pure gold. The lampstand *and* its base and its shaft are to be made of hammered work; its cups, its bulbs and its flowers shall be *of one piece* with it.

Where did they get the gold to build the tabernacle & 75 lbs of gold for the lampstand

Exodus 12:35-36 35And the people of Israel did as Moses had instructed; they asked the Egyptians for clothing and articles of silver and gold. 36The LORD caused the Egyptians to look favorably on the Israelites, and they gave the Israelites whatever they asked for. So they stripped the Egyptians of their wealth!

# Homework Assignment:

How was this piece of furniture “fulfilled” in the new testament?

Hebrews 4:14 **Jesus the Great High Priest - High priest role was to continually keep oil and lamps burn continually keep the wick's clean so it can burn brightly**

**14** Therefore, since we have a great high priest who has ascended into heaven, Jesus the Son of God, let us hold firmly to the faith we profess.

Rev 1:12-13 Then I turned to see the voice that was speaking with me. And having turned I saw seven golden lampstands; and in the middle of the lampstands I saw one like a son of man, clothed in a robe reaching to the feet, and girded across His chest with a golden sash.

Rev 1:20 As for the mystery of the seven stars which you saw in My right hand, and the seven golden lampstands: the seven stars are the angels of the seven churches, and the seven lampstands are the seven churches.

# Homework Assignment:

Since you are the temple of God, how is this furniture a symbol of you?

1 Thessalonians 5:5 You are all sons of light and sons of the day. We are not of the night nor of darkness.

Matthew 5: **14**“You are the light of the world. A city that is set on a hill cannot be hidden. **15**Nor do they light a lamp and put it under a basket, but on a lampstand, and it gives light to all *who are* in the house. **16**Let your light so shine before men, that they may see your good works and glorify your Father in heaven.





## **This is who you are!!!**

The light from the menorah is spiritual light. It was not seen from outside the tabernacle, but only while INSIDE the holy chamber not for anyone or anything else.

John 8:12 “I am the light of the world. He who follows Me shall not walk in darkness, but have the light of life.”

100 Fold    Seen Uncreated    Kingdom    Holy of Holies

Spirit

I AM the Light  
I AM the path, it is in me, the light illuminates my path  
I don't have to worry or fear, it will always light up



Rest Based

60 Fold    Unseen Created    Supernatural    Holy Place

Soul

I am to share my light to the world. I need to  
cast out devils and flow with the holy spirit  
and do what he shows me to do



Work Based

30 Fold    Seen Created    Natural    Outer Court

Body

Jesus can only be the light, I am only a reflection  
of that light. When I get to heaven I will be able  
to see Jesus face to face and it will be amazing



Work Based

Ask yourself this question: How Good is God?  
The way you answer is what determines your yield.





# The 10 Truths



**TODAY, RIGHT NOW, IS THE BEST MOMENT OF  
MY LIFE**

**ALL MY NEEDS ARE CONSTANTLY MET**

**I AM ALWAYS IN THE RIGHT PLACE, AT THE  
RIGHT TIME**

**GOD HAS GRANTED ME FAVOR, IN THE SIGHT OF  
THOSE AROUND ME**

**EVERYTHING MY HAND TOUCHES, PROSPERS**

**I HAVE AN ATTITUDE OF GRATITUDE**

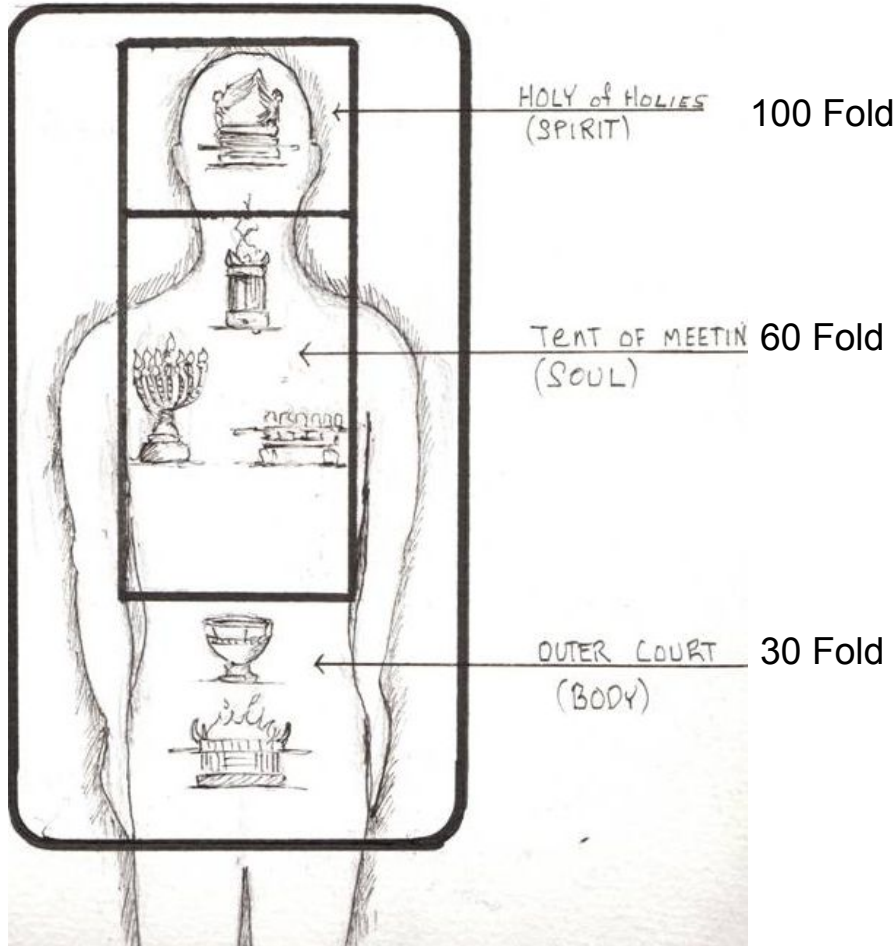
**CIRCUMSTANCES DON'T MATTER, ONLY STATE  
OF BEING MATTERS**

**I HAVE UNLIMITED POSSIBILITIES & RESOURCES**

**I WILL BE GOD TO SOMEONE, TODAY**

**LIFE IS A MIRROR, WHICH REFLECTS BACK,  
WHAT I TRULY BELIEVE AND THINK**

# I AM The Dwelling Place of God



## Temple Furniture

Bronze Altar

Bronze Laver

Table of Showbread

Golden Lampstand

## **Altar of Incense**

Ark of Covenant

Mercy Seat



Click on picture to find out more on our Website



Click on icon below to join us on Facebook

